

Introducing



JD Consulting Engineers Ltd
Design Fabrication Install

8 Park Mews
Retford
Nottinghamshire
DN22 6UT
Tele: 01777 869934
Mob: 07702 593836
07736 000288

VAT REG No: 121737337

Contents

1.....Introduction

2.....Experience

3.....Customers

4.....References

5.....Work Standards &
Certifications

6.....Certificate of Incorporation

7.....Employers Liability
Insurance Certificate

Click to edit Master subtitle style

Introduction to JD Consulting Engineers Ltd

The company was founded in Retford, Nottinghamshire in 2011 by two local senior construction engineers, who took the opportunity to effectively combine their tremendous knowledge and experience gained throughout their careers working for renown engineering, fabrication and construction companies within the UK.

The two principal owners of JD Consulting Engineers Ltd offer their customers skills and technical solutions supported by the combined 50 years experience gained effectively managing and delivering engineered projects to a range of Industry sectors, which encompass both heavy and light engineering solutions.

JD Consulting Engineers Ltd have the knowledge, experience and skill set to provide Turnkey solutions and also offers a full service from drawing board to installation and commissioning supported by the understanding that flexibility of approach is vitally important to fully accommodate customer demands.

Albeit JD Consulting Engineers Ltd is still in a business start-up phase of it's existence it is very proud of it's growing reputation of delivering quality solutions which exceed Customer expectations. The business focus and objective is to provide a cost effective reliable service and this ambition ensures *Customer Needs* are at the very heart of our activities.

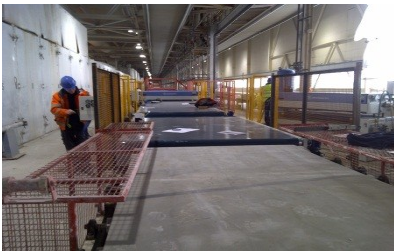
**“Large enough to provide an excellent engineering service and
small enough to focus on your specific needs. We aim to
exceed your expectations”**

Experience Portfolio – A range of successfully completed projects



Manufacture & Installation of Processing Equipment

Completed: May 2012



Conveyor Guard – Design, Manufacture & Installation

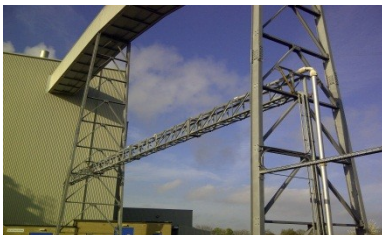
Completed: October 2011



aster

Foam Generator Installation

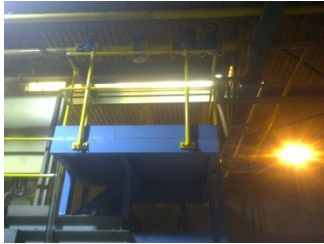
Completed: October 2011



Pipe Gantry – Design, Supply & Installation

Completed: September 2011

Experience Portfolio – A range of successfully completed projects



Fabricated Platform – Design, Supply & Installation

Completed: August 2011



Roller Door Installation

Completed: August 2011



Master s

Cladded Structure – Design & Installation

Completed: December 2011



Large Cladded Structure

Completed: January 2012

Experience Portfolio – A range of successfully completed projects



Hydraulic Crusher – Installation & Commissioning

Completed: May 2012



Decommissioning & Removal of Hot Oil Tanks and Pipework

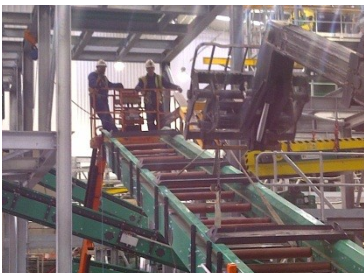
Completed: April 2012



Master & Subsite

Design & Installation of Access Support Platforms

Completed: August 2011



Design & Installation of Waste Conveyor System

Completed: August 2011



JD Consulting Engineers Ltd
Design Fabrication Install

Our Customers Include



Canning Conveyor



aster subtitle style



**C L STEEL FABRICATION
LIMITED**



Complete Customer Satisfaction Is Our
Goal!

Customer References

Whilst we have many successfully completed projects, we would offer the following three reference points for our recent engineering design, fabrication and construction activities.

Mr Richard Lomas - Project Manager
Stereocycle Ltd
Sheffield Road
Templeborough
Rotherham
Mobile:07791 402885

Mr Bob Palser - Project Engineer
Stereocycle Ltd
Sheffield Road
Templeborough
Rotherham
Mobile: 07909 594217
Email: bpalsere@stereocycle.com

Click to edit Master subtitle style

Mr Derrick Dacre - Project Manager
British Gypsum
East Leake Shared Service Centre
East Leake, Loughborough
Leicestershire LE12 6JU
Tel:0115 945 1000
Mobile: 07929461776
Email: derrick.dacre@saint-gobaine.com

Other references available if required.....

Work Standards & Certificates

The Directors of JD Consulting Engineers Ltd have four year apprenticeships and hold a City & Guilds qualification in Fabrication and Welding techniques. Both hold IPAF Certificates and are trained in the use of Mechanical Elevating Work Platforms (MEWPS). Certificates are also held for the use of Scissor lifts and Cherry Pickers.

Certificates are also held for Appointed Person Training for the supervision and operation of lifting operations.

C.P.C.S. Licenced Tele-handler Driver certification held.

P.A.S.M.A Training and Certification for the Erection and Inspection of both mobile and zip scaffolding.

National Assessment safety and C.P.C.S. safe use of scissor lifts certificates held.

[Click to edit Master subtitle style](#)



**CERTIFICATE OF INCORPORATION
OF A
PRIVATE LIMITED COMPANY**

Company Number. 7797978

The Registrar of Companies for England and Wales, hereby certifies that

JD CONSULTING ENGINEERS LIMITED

is this day incorporated under the Companies Act 2006 as a private company, that the company is limited by shares, and the situation of its registered office is in England and Wales.

Given at Companies House, Cardiff, on 5th October 2011.



THE OFFICIAL SEAL OF THE
REGISTRAR OF COMPANIES



Companies House
— for the record —

The above information was communicated by electronic means and authenticated by the
Registrar of Companies under section 1115 of the Companies Act 2006



AXA Insurance UK plc
Registered Office
5 Old Broad Street
London EC2N 1AD
Registration
England No. 78950

CERTIFICATE OF EMPLOYERS' LIABILITY INSURANCE (a)

(Where required by regulation 5 of the Employers' Liability (Compulsory Insurance) Regulations 1998 (the Regulations), one or more copies of this certificate must be displayed at each place of business at which the policyholder employs persons covered by the policy)

POLICY No	CW PCL 2802616
1. NAME OF POLICYHOLDER	JD Consulting Engineers Ltd
2. DATE OF COMMENCEMENT OF INSURANCE POLICY	24/10/2011
3. DATE OF EXPIRY OF INSURANCE POLICY	23/10/2012

We hereby certify that subject to paragraph 2 :-

1. the policy to which this certificate relates satisfies the requirements of the relevant law applicable in Great Britain (b) Northern Ireland, the Isle of Man, the Island of Guernsey, the Island of Jersey and the Island of Alderney; and
2. (a) the minimum amount of cover provided by this policy is no less than £5 million (c)

Signed on behalf of AXA Insurance UK plc (Authorised Insurer)

Amanda Blanc
CEO - AXA Commercial Lines

Notes

- (a) Where the employer is a company to which regulation 3(2) of the Regulations applies, the certificate shall state in a prominent place, either that the policy covers the holding company and all its subsidiaries, or that the policy covers the holding company and all its subsidiaries except any specifically excluded by name, or that the policy covers the holding company and only the named subsidiaries.
- (b) Specify applicable law as provided for in regulation 4(6) of the Regulations.
- (c) See regulation 3(1) of the Regulations and delete whichever of paragraphs 2(a) or 2(b) does not apply. Where 2(b) is applicable, specify the amount of cover provided by the relevant policy.

AXA insurance UK plc

Registered in England No. 08950 & office at 5 Old Broad Street, London EC2N 1AD.
A member of the AXA Group of Companies.

AXA Insurance UK plc is a licensed and regulated by the Financial Services Authority.
In order to maintain a quality service, telephone calls may be monitored or recorded.